

MALATHION INSECT CONTROL CONCENTRATE

CONTROLS SCALES, THRIPS, LEAFHOPPERS, JAPANESE BEETLES, CODLING MOTHS AND OTHER LISTED SUCKING AND CHEWING INSECTS. ALSO CONTROLS MOSQUITOES AND SMALL FLYING INSECTS.

USE ON ASPARAGUS, TOMATOES, LETTUCE, MELONS, SQUASH, APPLES, BLACKBERRIES, CITRUS FRUITS, ORNAMENTALS, ROSES AND CARNATIONS, PLUS OTHER LISTED FRUITS AND VEGETABLES. **MIX** 1 TO 4 TSP. PER GALLON OF WATER DEPENDING ON THE PLANT ON WHICH IT IS TO BE APPLIED. **READ AND USE ACCORDING TO LABEL DIRECTIONS. APPLY** USING A TANK SPRAYER, HOSE END SPRAYER OR WATERING CAN.

Store and transport in an upright position.

EPA Est. No. 4-NY-1
EPA Reg. No. 4-99

Buyers Guarantee Limited to Label Claims.

Bonide Products, Inc.
6301 Sutliff Road
Oriskany, NY 13424

Pint

BN



DIRECTIONS FOR USE

It is a violation of Federal law to use this product in a manner inconsistent with its labeling. This product controls a great diversity of insects; including aphid, spider mites, scales, as well as a wide range of other sucking and chewing insects attacking listed fruits, vegetables and ornamentals, and controls mosquitoes and small flying insects.

DIRECTIONS

For proper mixing, the spray tank should be at least 3/4 filled with water before this product is added. Shake sprayer occasionally or agitate to keep spray particles in suspension during application. Follow spray schedule given in SPRAY CHART.

Do not apply this product through any type of irrigation system. For home garden use only.

Crop	Insects	When to Apply	Amount
Asparagus	Asparagus Beetle, Asparagus Aphid	Make 2 or more applications as needed up to 1 day of harvest.	2 1/2 tsp./gal. water per 1750 to 3500 sq. ft.
	Thrips		2 tsp./gal. water
Beans (Lima, Green, Snap, Navy, Red, Kidney, Wax, Cowpeas, Blackeyed Peas)	Mexican Bean Beetle, Spider Mites, Japanese Beetle, Aphids, Cucumber Beetle	Make 2 or more applications as needed up to 3 days of harvest.	3 tsp./gal. water per 1750 to 3500 sq. ft.
	Tomatoes		
Pumpkins	Aphids, Mites, Squash Vine Borers*	*Make full coverage applications weekly to stems and vines at base of plants. Consult Cooperative Agricultural Extension Service for proper timing.	1 1/2 tsp./gal. water per 1750 to 3500 sq. ft.
Eggplant	Aphids, Spider Mites		4 tsp./gal. water per 1750 to 3500 sq. ft.
	Lace Bugs	2 1/2 tsp./gal. water per 1750 to 3500 sq. ft.	
Onions	Thrips, Onion Maggots	3 tsp./gal. water per 1750 to 3500 sq. ft.	
Peppers	Aphids	3 tsp./gal. water per 1750 to 3500 sq. ft.	
	Pepper Maggots		
Rutabagas	Aphids	1 1/2 tsp./gal. water per 1750 to 3500 sq. ft.	

Cont. from page 2

Crop	Insects	When to Apply	Amount
Sweet Potato	Leafhoppers, Morningglory Leafminer	Make 2 or more applications as needed up to 3 days of harvest.	3 tsp./gal. water per 1750 to 3500 sq. ft.
Potatoes (White or Irish)	False Chinch Bugs, Aphids, Leafhoppers, Mealybugs	Make 2 or more applications as needed up to day of harvest.	1 1/2 tsp./gal. water per 1750 to 3500 sq. ft.
Lettuce	Leafhoppers, Aphids, Cabbage Looper	Make 2 or more applications as needed up to 7 days of harvest on head lettuce (14 days on leaf lettuce).	4 tsp./gal. water per 1750 to 3500 sq. ft.
Corn (Sweet and Pop)	Aphids, Sap Beetle, Thrips	Make 2 or more applications as needed up to 5 days of harvest. Do not apply in the whorl or silk stage as injury may occur.	2 tsp./gal. water per 1750 to 3500 sq. ft.
	Grasshoppers	Make full coverage application to foliage when nymphs are young.	
	Corn Rootworm adults (for protection of silks)	Make full coverage application when adult beetles become abundant.	
Melons (Cantaloupes, Casabas, Crenshaws, Honeydews, Honey Balls, Muskmelons, Persians, Watermelons and hybrids of these)	Aphids, Spider Mites, Cucumber Beetles	Make 2 or more applications as needed up to 1 day of harvest. Do not apply unless plants are dry.	3 tsp./gal. water per 1750 to 3500 sq. ft.
Squash	Aphids, Spider Mites, Pickworm, Squash Vine Borers*, Cucumber Beetles	*Make full coverage applications weekly to stems and vines at base of plants. Consult Agricultural Cooperative Extension Service for proper timing.	
Cucumber	Aphids, Spider Mites, Cucumber Beetles		

Cont. from page 3

Crop	Insects	When to Apply	Amount
Cole Crops and Leafy Vegetables (Broccoli, Brussels Sprouts, Cabbage, Collards, Dandelions, Kale, Kohlrabi, Mustard Greens, Parsley, Swiss Chard, Turnips, Watercress, Cauliflower)	Aphids, Flea Beetles (on mustard greens only), Diamond Back Moth Caterpillars (on cauliflower, collards, Brussels sprouts and broccoli only), Harlequin Cabbage Bug (on collards only)	Make 2 or more applications as needed up to 7 days of harvest (turnips [including tops] & broccoli—3 days, parsley—21 days.)	3 tsp./gal. water per 1750 to 3500 sq. ft.
Celery	Spider Mites, Aphids		
Spinach	Aphids		
Carrots	Aphids, Leafhoppers		
Beets	Aphids, Leafhoppers		
Endive	Aphids, Mites		1 1/2 tsp./gal. water per 1750 to 3500 sq. ft.
Apples	Wooly Apple Aphids, Bud Moth, Forbes Scale, Green Apple Aphids, Rosy Apple Aphid, Mealybug, Codling Moth, Plum Curculios, Red Banded Leaf Roller, Tent Caterpillar	Start to spray when leaves first start to appear. Repeat at 10 day intervals until bloom. Do not spray during blossom period. Repeat at 14 day intervals after bloom, up to 3 days before harvest. May cause injury to McIntosh and Cortland varieties of apple.	Apply at the rate of 2 tsp./gal. water.

Cont. from page 4

Crop	Insects	When to Apply	Amount
Apricots	Codling Moth, Orange Tortrix, Terrapin Scale, Soft Brown Scale, Aphids	Start to spray early in season. Repeat at 10 day intervals until bloom. Do not spray during blossom period. Repeat at 14 day intervals after bloom, up to 7 days of harvest.	Apply at the rate of 1 1/2 tsp./gal. water.
Cherries	Black Cherry Aphid, Fruit Tree Roller, Cherry Fruit Fly, Bud Moth, Mealy Plum Aphid	Spray as for apricots, up to 3 days of harvest.	Apply at the rate of 1 1/2 tsp./gal. water.
Peaches	Oriental Fruit Moth, Plum Curculios; green peach, black cherry, black peach, Rusty Plum Aphids, Japanese Beetle; Terrapin, Cottony Peach Scales	Spray as for apricots, up to 7 days of harvest.	Apply at the rate of 2 tsp./gal. water.
Citrus-grapefruit, lemons, limes, oranges, tangerines, tangelos, kumquats	California Red, Yellow, Purple, Black (single and off brooded), Soft, Citricola Scales; Florida Red and Purple Scales (light & medium infestations); Thrips		
Pears	Mealybugs, Mites, Pear Psylla, Codling Moth, Plum Curculios, Fruit Tree & Red Banded Leaf Rollers	Spray as for apricots, up to 1 day of harvest.	

Cont. from page 5

Crop	Insects	When to Apply	Amount
Blackberries, Boysenberries, Dewberries, Loganberries, Raspberries	Mites, Thrips, Leafhoppers, Japanese Beetles, Aphids, Rose Scale, Sap Beetle	Make 2 or more applications up to day of harvest.	3 tsp./gal. water per 435 sq. ft.
Blueberries	Japanese Beetle		1 1/2 tsp./gal. water per 435 sq. ft.
Ornamentals	Aphids, Mealybugs, Spider Mites, Whitefly, Four-lined Plant Bug, Japanese Beetle, Potato Leafhopper, Tarnished Plant bug, Thrips, Rose Leafhoppers, European Pine Shoot Moth, Birch Leaf Miner, Boxwood Leaf Miner, Bagworms, Tent Caterpillar	Spray thoroughly both top and undersides of leaves until slightly dripping as soon as insects appear. Repeat as needed. Injury may occur on ferns, hickory, viburnum, lantana, crassula and canaerti juniper.	2 tsp./gal. water per 435 sq. ft.
	Oak Kermes, Azalea, Pine Leaf, Magnolia, Fletcher, Florida Red, Juniper, Black, Scurfy, Euonymus, Oyster Shell, Monterey Pine, Soft, Pine Needle Scales		4 tsp./gal. water per 435 sq. ft.
Ornamental Greenhouse (in and around hobby greenhouses and flower gardens)	Millipedes, Springtails, Sowbugs	Apply when insects appear. Repeat at 7-10 day intervals as needed.	1 tsp./gal. water, and apply to 150 sq. ft. of soil surface.
Roses, Chrysanthemums, Carnations	Aphids, Whiteflies, Mealybugs, Thrips, Two-spotted Mite	Spray thoroughly both top and undersides of leaves until slightly dripping as soon as insects appear. Repeat as needed.	2 tsp./gal. water.

MOSQUITOES AND SMALL FLYING INSECTS

NOTE: THIS PRODUCT MAY CAUSE SPOTTING ON AUTOMOBILE PAINT FINISH. CARS SHOULD NOT BE SPRAYED DIRECTLY. IF ACCIDENTAL EXPOSURE OCCURS, THE CAR SHOULD BE WASHED IMMEDIATELY.

Outdoors: Use a Bonide Malathion 2% to 5% area spray, fog or aerosol. As a 2% area or patio spray, dilute 50% emulsifiable liquid 1 part to 25 parts water or 5 oz. to 1 gallon water. When using kerosene type solvents, such as fuel oil or diesel oil, as carriers, dilute 1 part 50% emulsifiable liquid in 25 parts of a mixture consisting of 4 parts kerosene type solvent and 1 part aromatic hydrocarbon type solvent. For 5%, dilute 1-11 using similar solvents. Repeat applications as necessary. Avoid applying oil-based formulations to plants as injury may occur.

STORAGE AND DISPOSAL

Storage: Store and transport in an upright position. Store in a cool dry area inaccessible to children or pets.

Disposal: *If empty-* Do not reuse this container. Place in trash or offer for recycling if available. *If partly filled-* Call your local solid waste agency for disposal instructions. Never place unused product down any indoor or outdoor drain.

FIRST AID

Have the product container or label with you when calling a poison control center or doctor, or going for treatment. You may also contact the National Pesticide Information Center at 1-800-858-7378 for emergency medical treatment information.

If Swallowed:	<ul style="list-style-type: none">• Call a poison control center or doctor immediately for treatment advice.• Do not give any liquid to the person.• Do not induce vomiting unless told to do so by the poison control center or doctor.• Do not give anything by mouth to an unconscious person.
If Inhaled:	<ul style="list-style-type: none">• Move person to fresh air.• If person is not breathing, call 911 or an ambulance, then give artificial respiration, preferably by mouth-to-mouth, if possible.• Call a poison control center or doctor for further treatment advice.

FIRST AID Cont.

If on Skin or Clothing:	<ul style="list-style-type: none">• Take off contaminated clothing.• Rinse skin immediately with plenty of water for 15-20 minutes.• Call a poison control center or doctor for treatment advice.
If in Eyes:	<ul style="list-style-type: none">• Hold eye open and rinse slowly and gently with water for 15-20 minutes.• Remove contact lenses, if present, after the first 5 minutes, then continue rinsing eye.• Call a poison control center or doctor for treatment advice.

NOTE TO PHYSICIAN: This product may cause cholinesterase inhibition. Atropine is antidotal. 2-PAM may be effective as an adjunct to atropine. Contains petroleum distillate- vomiting may cause aspiration pneumonia.

PRECAUTIONARY STATEMENTS HAZARDS TO HUMANS AND DOMESTIC ANIMALS

CAUTION: Harmful if swallowed or inhaled. Avoid breathing spray mist or contact with skin, eyes or clothing. May be absorbed through skin. Do not use on humans. When used indoors in hobby greenhouses use only with adequate ventilation. After using this product indoors in hobby greenhouses, ventilate thoroughly before occupying enclosed spaces. Do not allow contact with treated surface until sprays have dried.

ENVIRONMENTAL HAZARDS

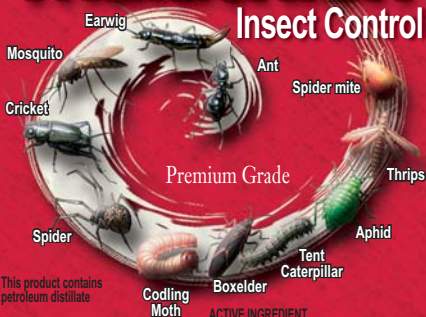
This pesticide is toxic to fish, aquatic invertebrates, and aquatic life stages of amphibians. Do not apply directly to water. Drift and runoff may be hazardous to aquatic organisms in areas near the application site. Do not contaminate water when disposing of equipment washwaters. This product is highly toxic to bees exposed to direct treatment on blooming crops or weeds. Do not apply this product or allow it to drift to blooming crops or weeds if bees are visiting the treatment area.

PHYSICAL HAZARDS

Do not use, pour, spill or store near heat or open flame.

Malathion®

Insect Control



This product contains petroleum distillate

**Keep Out Of
Reach Of Children**

CAUTION

(See Back Panel for Additional
Precautionary Statements)

Net Contents 16 FL. OZ. (473 ML.)

ACTIVE INGREDIENT

Malathion . . . (CAS No. 121-75-5) . . .	50.00%
OTHER INGREDIENTS	50.00%
Total	100.00%

EPA Est. No. 4-NY-1
EPA Reg. No. 4-99

TRUSTED SINCE 1926

BONIDE®

Controls a great diversity of insects: Including aphids, spider mites and boxelder, as well as a wide range of other sucking & chewing insects attacking listed fruits, vegetables, ornamentals AND controls mosquitoes & small flying insects.

Material Safety Data Sheet
May be used to comply with
OSHA's Hazard Communication Standard,
29 CFR 1910.1200. Standard must be consulted
for specific requirements.

U.S. Department of Labor
Occupational Safety and Health Administration
(Non-Mandatory Form)
Form Approved
OMB No. 1218-0072

IDENTITY (As Used on Label and List) Bonide Malathion 50% Insect Control

ID No. 499
Date: March 10, 2008

Section I

Bonide Products, Inc.
6301 Sutliff Road
Oriskany, NY 13424

(800) 424-9300
(315) 736-8231

Section II - Hazardous Ingredients/Identity

Hazardous Components (Specific Chemical Identity: Common Name(s))	OSHA PEL	ACGIH	TLV	Other Limits	% (Optional)
Malathion: O,O-Dimethyl Phosphorothioate of Diethyl Mercaptosuccinate CAS No. 121-75-5	15 mg/M3		10 mg/M3		

Section III - Physical/Chemical Characteristics

BOILING POINT: ND SPECIFIC GRAVITY (water=1): 1.06 pH: ND
MELTING POINT: ND BULK DENSITY (lbs/cu.ft.): NA
SOLUBILITY IN WATER: Emulsifies. Active ingredient essentially insoluble.
APPEARANCE & ODOR: Light straw colored , free-flowing liquid with strong, aromatic odor.

Section IV - Fire and Explosion Hazard Data

FLASH POINT (Method used): ND LEL: ND UEL: ND
NFPA/HMIS Rating: Health: 2 Fire: 1 Reactivity: 0
EXTINGUISHING MEDIA: Foam, Water Spray, CO2, Dry Chemical FLAMMABLE LIMITS: ND
SPECIAL FIRE FIGHTING PROCEDURES: Keep containers cool by spraying with water if exposed to fire. Fight fire upwind. Avoid heavy hose streams. Dike area to prevent water runoff. Firemen should wear self-contained breathing apparatus and protective clothing.
UNUSUAL FIRE & EXPLOSION HAZARDS: Essential breakdown products are: dimethyl sulfide, sulfur dioxide, carbon monoxide, carbon dioxide, phosphorus pentoxide and nitrogen oxides.

Section V - Reactivity Data

STABILITY: Stable INCOMPATIBILITY: Alkaline materials and strong oxidizers.
CONDITIONS TO AVOID: High temperatures, open flame, alkaline materials.
HAZARDOUS DECOMPOSITION PRODUCTS: Dimethyl sulfide, sulfur dioxide, carbon monoxide, carbon dioxide, phosphorus pentoxide, nitrogen oxides.
HAZARDOUS POLYMERIZATION: Will not occur

Section VI - Health Hazard Data

ROUTES OF ENTRY: Skin, eyes, inhalation, ingestion.

SIGNS AND SYMPTOMS OF EXPOSURE:

Acute: Active ingredient is a cholinesterase inhibitor of low mammalian toxicity. May cause eye and/or skin irritation. Vapors may irritate eyes. Prolonged skin and/or eye contact may result in material being absorbed in harmful amounts. Single dose oral toxicity is moderate: however, ingestion of larger amounts may cause serious injury. Inhalation of excessive amounts may cause upper respiratory tract irritation. Symptoms include headaches, dizziness, incoordination, drowsiness and unconsciousness.

Chronic: Repeated exposure to cholinesterase inhibitors may, without warning, cause increased susceptibility to doses of any other cholinesterase inhibitor. Kidney and liver damage is possible from exposure to xylenes over long periods.

Section VI - Health Hazard Data (cont'd)

EMERGENCY AND FIRST AID PROCEDURE:

INHALATION: Remove to fresh air. Consult a physician if symptoms or irritation develops.

SKIN: Remove any contaminated clothing. Wash skin with soap and water. Call a physician if irritation persists. Launder clothing before reuse.

INGESTION: Do not induce vomiting. call a physician and/or transport to an emergency facility.

EYES: Irrigate immediately and continuously for 15 minutes. Consult a physician.

CARCINOGENICITY: NE NTP: NE

IARC MONOGRAPHS: NE OSHA REGULATED: NE

MEDICAL CONDITIONS GENERALLY AGGRAVATED BY EXPOSURE: Any disease, medication, or prior exposure which reduces normal cholinesterase activity may increase the susceptibility to the toxic effect of the active ingredient.

NOTE TO PHYSICIAN: Active ingredient is a cholinesterase inhibitor affecting the central and peripheral nervous systems and producing cardiac and respiratory depression. Atropine sulfate in large doses is an antidote. Two to four mg intravenously or intramuscularly as soon as cyanosis is overcome. Repeat at 5 to 10 minutes intervals until signs of atropinization appear. 2-PAM chlonde is a pharmacological antidote and may be administered as an adjunct to, but not a substitute for atropine, which is a symptomatic and often lifesaving antidote.

DO NOT GIVE MORPHINE OR TRANQUILLIZERS. At first sign of pulmonary edema, the patient should be given supplemental oxygen and treated symptomatically. Continued absorption of malathion may occur and relapse may occur after initial improvement.

Very close supervision of the patient is indicated for at least 48 hours.

Section VII - Precautions for Safe Handling and Use

HANDLING PRECAUTIONS: Do not take internally. Avoid contact with skin, eyes and clothing. Wash after handling. Do not contaminate water by disposal of equipment washwaters.

STORAGE: Store in a cool, dry place out of reach of children and animals.

PERSONAL PROTECTIONS:

Protective Equipment(Outdoors applications): Impervious gloves, Impervious boots, eye goggles/safety glasses, clean clothing.

Protective Equipment(Confined Areas): Sufficient Ventilation, Respirator (use NIOSH/MSHA approved), Splash Goggles/Safety glasses, eyewash station.

Section VIII - Environmental and Disposal Information

SPILL OR LEAK PROCEDURES: Wear protective equipment. Small spills should be absorbed on inert materials such as sand, absorbent clay, sawdust or other absorbent material. Prevent entry into water. Sweep or scoop into proper labeled containers for disposal. Large spills should be diked then treated in same manner as small spills.

WASTE DISPOSAL METHODS: Dispose according to EPA procedures as outlined in RCRA. Follow local and state requirements.

ENVIRONMENTAL HAZARDS: This product is toxic to fish, bees, aquatic invertebrates and aquatic life stages of amphibians.

Section IX- Regulatory Information

SARA information: SARA TITALE III: SEC. 311/312 HAZARD CATEGORIES

Immediate (Acute) Health: Y

Sudden Release of Pressure: N

Delayed (Chronic) Health: Y

Reactivity: N

Section X - Toxicological Information

Toxicity: Active ingredient in laboratory tests has been shown to be slightly irritation to eyes and skin, nor a skin sensitizer (guinea pigs), not carcinogenic, not teratogenic (rats and rabbits), not mutagenic and shows no reproductive effects (rabbits and rats).

Positive Teratogen/Mutagen/Carcinogen (NTP): No

Potential Carcinogen (IARC/OSHA): No

Section XI - Other Information

DOT Shipping information:

Proper Shipping Name: Environmentally hazardous Substances, Liquid, N.O.S. (Malathion), Class 9, UN 3082, PG III, Marine Pollutant.

I.D. No.: UN3082

Hazard Class: NA

Hazmat No.: Na

SEC. 302: NA

SEC. 304: NA

SEC. 313: YES

SARA Title III - Section 313 Supplier Notification: This product contains the following toxic chemical(s) subject to the reporting requirements of Section 313 of the Emergency Planning and Community Right-To-Know Act (EPCRA) or 1986 and 40 CFR 372:

Chemical: Aromatic Hydrocarbon

CAS No. 98-82-8

Percent in Mixture: 32.9

This information must be included on all MSDS'S that are copied and distributed for this material:

Other Environmental Information: Section 313 Chemicals: Aromatic hydrocarbon contains the following reportable ingredients:

Trimethylbenzene CAS No. 95-63-6

Curnene CAS No. 98-82-8

Xylene CAS No. 1330-20-7

Ethylbenzene CAS No. 100-41-4

CERCLA: RQ=100lbs (malation)

CAA: NA

KEEP OUT OF REACH OF CHILDREN

ABBREVIATION KEY

N/A: NOT AVAILABLE OR APPLICABLE

N/E: NOT ESTABLISHED

ND: Not Determined

TLV: THRESHOLD LIMIT VALUE

TWA: TIME WEIGHTED AVG./8 HOUR WORKDAY

STEL: SHORT TERM EXPOSURE LIMIT

D.O.T.: DEPARTMENT OF TRANSPORTATION

DISCLAIMER OF EXPRESSED AND IMPLIED WARRANTIES

Buyer assumes all risks of use, storage and handling of this material not in strict accordance with directions given herewith.